



# Matisse

## From the Analyze Re Product Suite

### This document covers the Matisse Scope of Software features as of January 2023

#### Loss Data

- Compare multiple vendors within the same tables
- Filter by model and region
- Review stochastic and deterministic loss types

#### Structuring

- See companywide to individual deals in a collapsible view
- Visualize the magnitude of losses flowing through structures
- Use Data Source Manager to edit structures in a table format
- Maintain a version history with autosave for structures

#### Customizable Metric Dashboards

- Make edits within dynamic data tables
- Display your own fields
- Review AEP and OEP return period metrics by region/peril
- Perform marginal calculations, back allocations, and co-metrics
- Save custom dashboards as templates with version history

#### Custom Formulas

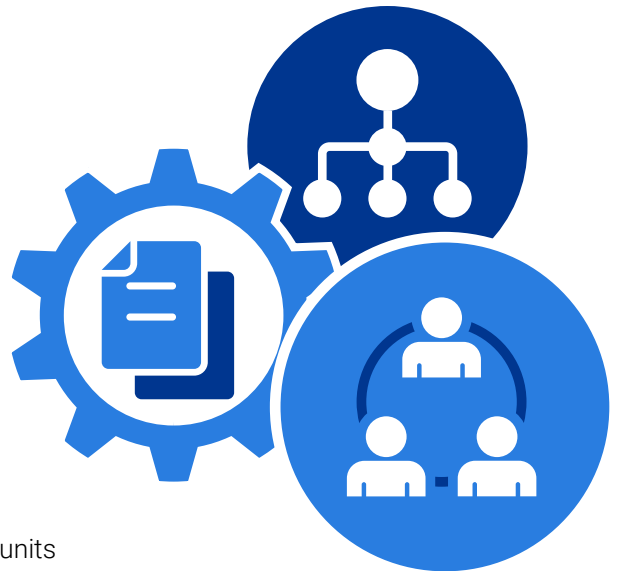
- Create your own pricing formulas
- Use your own variables to fully customize your calculations
- Perform dynamic calculations

#### Sharing/Collaboration

- Have multiple dashboards in your organization for different business units
- Easily collaborate on your work within your teams

#### Portfolio Management

- Quickly create portfolios containing all of your relevant layers
- Slice portfolios by any metadata field and report metrics independently



Matisse provides multiple workflow enhancements.



### **Catastrophe Modeler**

- Multi-model evaluation across vendors
- Custom weightings applicable to loss results
- Region/peril detail



### **Underwriter**

- Sophisticated profit-based analysis
- Customizable pricing tables and dashboards
- Back allocation to layers and loss sets
- Marginal impact calculation for new layers



### **Portfolio Manager**

- Versatile portfolio creation
- Portfolio rollup at various resolutions
- Side-by-side Comparison of multiple portfolios
- Contribution metrics
- Seasonal metrics



### **Chief Risk Officer**

- Reporting across all business units
- Retro structuring
- Back allocation of cost to business units
- Seasonal metrics



+1.617.267.6645 / [contactus@verisk.com](mailto:contactus@verisk.com) / [verisk.com](https://www.verisk.com)